

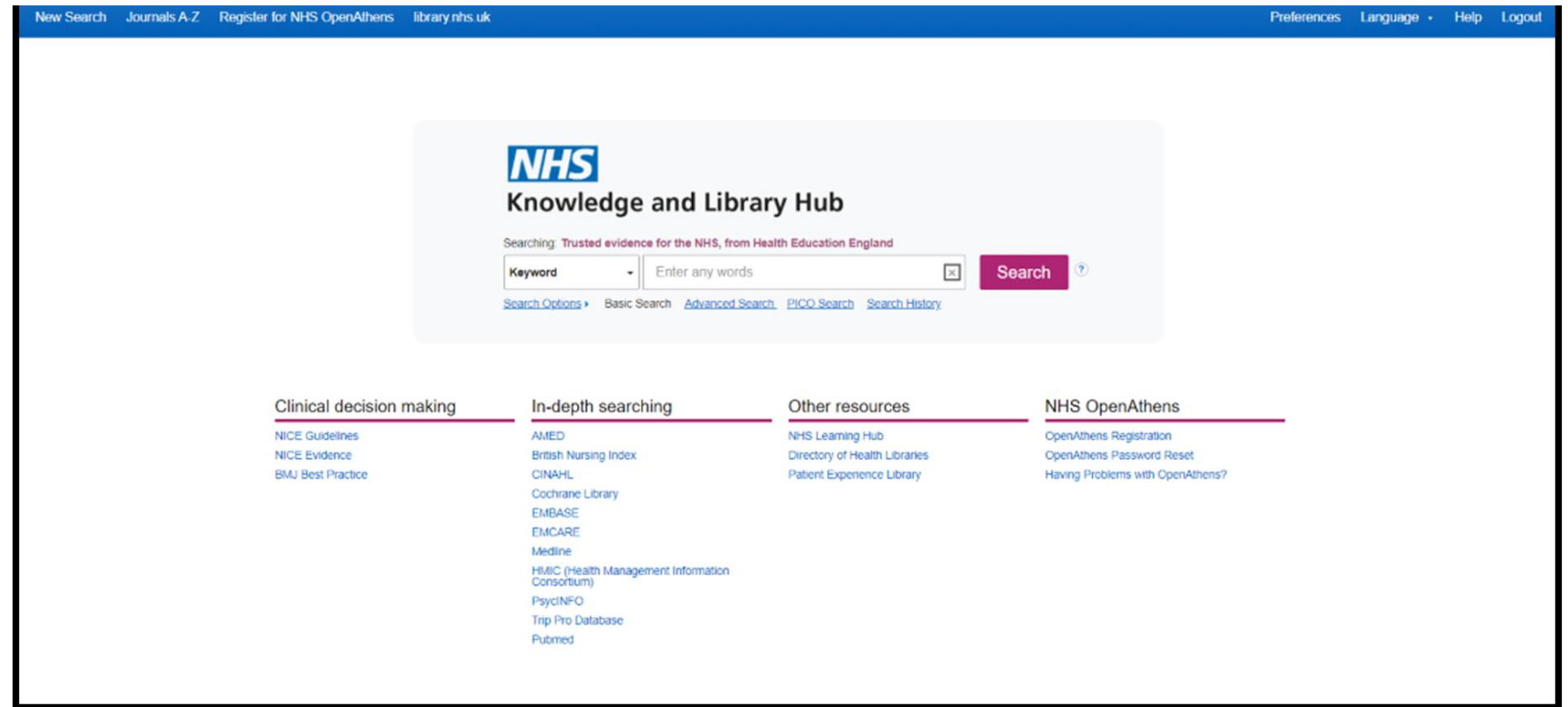
# Knowledge and Library Resources for Primary Care

Beth Thompson  
Knowledge Specialist

# Knowledge and Library Hub

[Access BLMK  
Knowledge  
and Library Hub](#)

[Info about the  
hub and  
generic access  
link](#)



The screenshot shows the NHS Knowledge and Library Hub website. The top navigation bar includes links for 'New Search', 'Journals A-Z', 'Register for NHS OpenAthens', 'library.nhs.uk', 'Preferences', 'Language', 'Help', and 'Logout'. The main content area features the NHS logo and the title 'Knowledge and Library Hub'. Below this, a search bar is labeled 'Searching: Trusted evidence for the NHS, from Health Education England'. The search bar has a 'Keyword' dropdown menu, a text input field with the placeholder 'Enter any words', and a 'Search' button. Below the search bar, there are links for 'Search Options', 'Basic Search', 'Advanced Search', 'PICO Search', and 'Search History'. The bottom section of the page is divided into four columns: 'Clinical decision making' (with links to NICE Guidelines, NICE Evidence, and BMJ Best Practice), 'In-depth searching' (with links to AMED, British Nursing Index, CINAHL, Cochrane Library, EMBASE, EMCARE, Medline, HMCIC (Health Management Information Consortium), PsycINFO, Trip Pro Database, and PubMed), 'Other resources' (with links to NHS Learning Hub, Directory of Health Libraries, and Patient Experience Library), and 'NHS OpenAthens' (with links to OpenAthens Registration, OpenAthens Password Reset, and Having Problems with OpenAthens?).

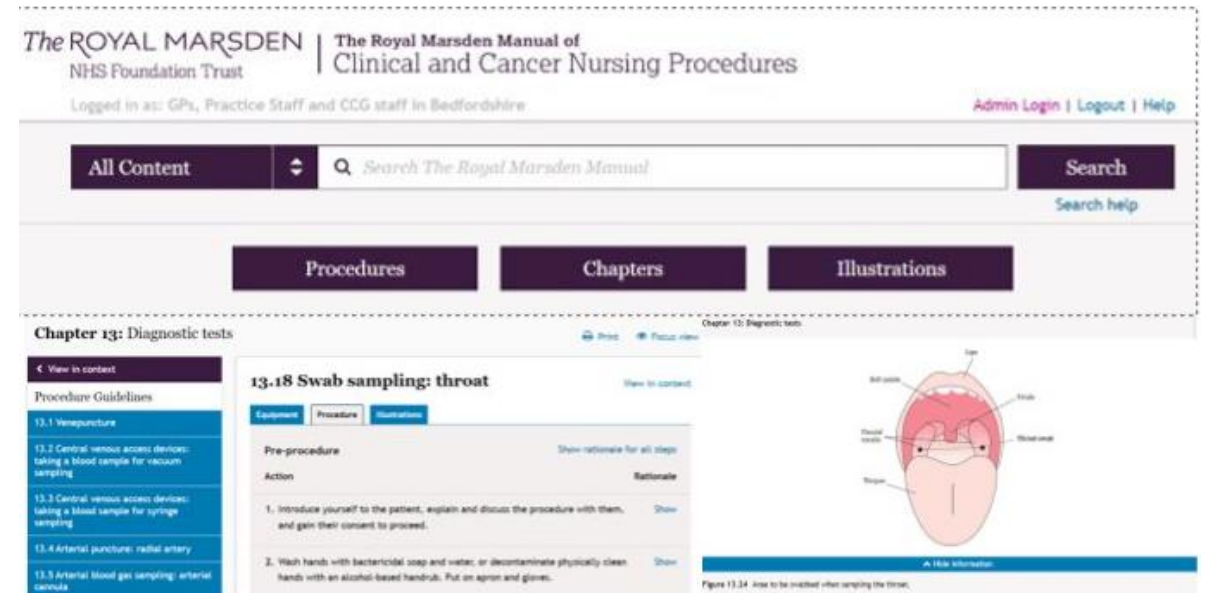
# BMJ Best Practice

- Access via the Knowledge and Library Hub
- Or [via this link](#)
- Download the app to access anywhere



# Royal Marsden Manual

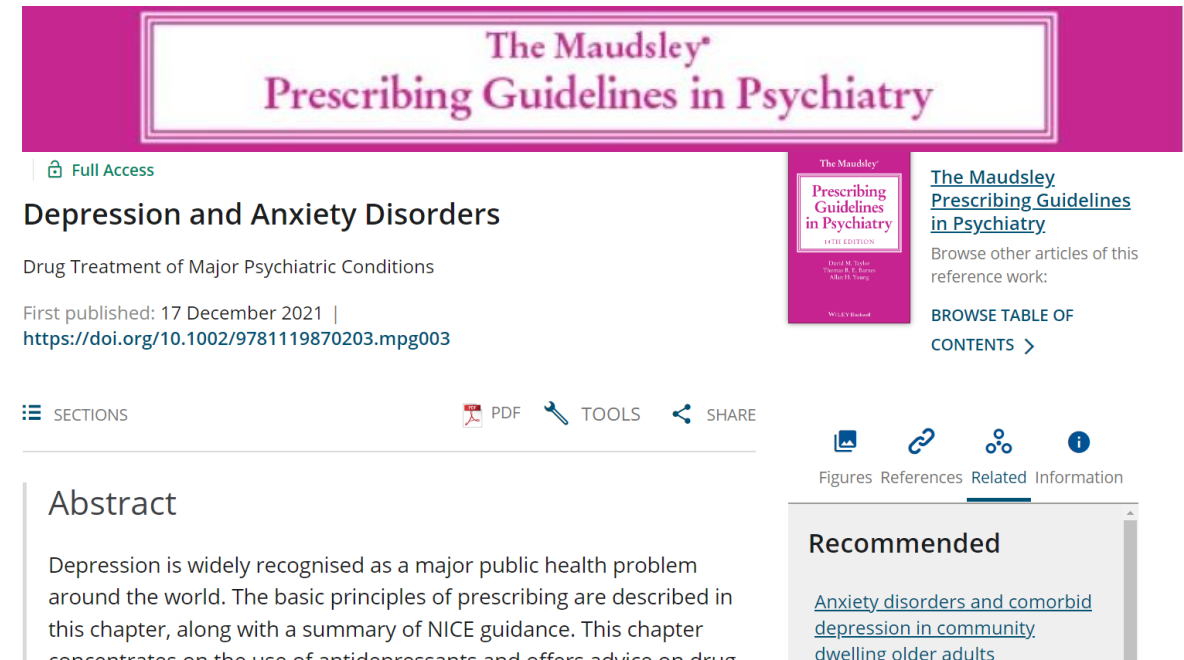
- Access via the Knowledge and Library Hub
- Or [direct via this link](#)



The screenshot displays the website for 'The ROYAL MARSDEN NHS Foundation Trust | The Royal Marsden Manual of Clinical and Cancer Nursing Procedures'. The page is logged in as 'GPs, Practice Staff and CCG staff in Bedfordshire'. It features a search bar with the text 'Search The Royal Marsden Manual' and a 'Search' button. Below the search bar are three tabs: 'Procedures', 'Chapters', and 'Illustrations'. The main content area shows 'Chapter 13: Diagnostic tests' with a 'View in context' link. A sidebar on the left lists 'Procedure Guidelines' including '13.1 Venepuncture', '13.2 Central venous access devices: taking a blood sample for vacuum sampling', '13.3 Central venous access devices: taking a blood sample for syringe sampling', '13.4 Arterial puncture: radial artery', and '13.5 Arterial blood gas sampling: arterial cannula'. The main content area displays '13.18 Swab sampling: throat' with a 'View in context' link. It includes a table with 'Equipment', 'Procedure', and 'Illustrations' tabs. The 'Procedure' tab is active, showing 'Pre-procedure' and 'Action' steps. The 'Action' steps are: 1. 'Introduce yourself to the patient, explain and discuss the procedure with them, and gain their consent to proceed.' and 2. 'Wash hands with bactericidal soap and water, or decontaminate physically clean hands with an alcohol-based handrub. Put on apron and gloves.' To the right of the table is an illustration of a throat with labels for 'Soft palate', 'Uvula', 'Tongue', 'Pharynx', and 'Esophagus'. Below the illustration is a caption: 'Figure 13.14 Area to be swabbed when sampling the throat.'

# Maudsley Prescribing Guidelines

- Access via the Knowledge and Library Hub
- Or [direct via this link](https://doi.org/10.1002/9781119870203.mpg003)



The Maudsley\*  
Prescribing Guidelines in Psychiatry

Full Access

## Depression and Anxiety Disorders

Drug Treatment of Major Psychiatric Conditions

First published: 17 December 2021 |  
<https://doi.org/10.1002/9781119870203.mpg003>

SECTIONS PDF TOOLS SHARE

### Abstract

Depression is widely recognised as a major public health problem around the world. The basic principles of prescribing are described in this chapter, along with a summary of NICE guidance. This chapter concentrates on the use of antidepressants and offers advice on drug

[The Maudsley Prescribing Guidelines in Psychiatry](#)  
Browse other articles of this reference work:  
[BROWSE TABLE OF CONTENTS >](#)

Figures References Related Information

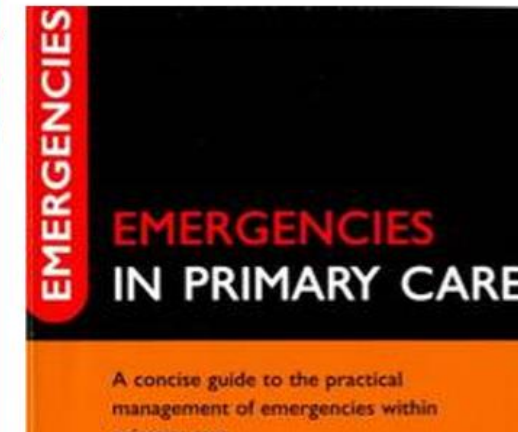
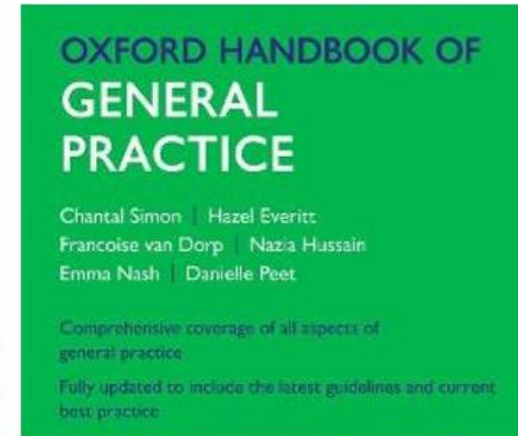
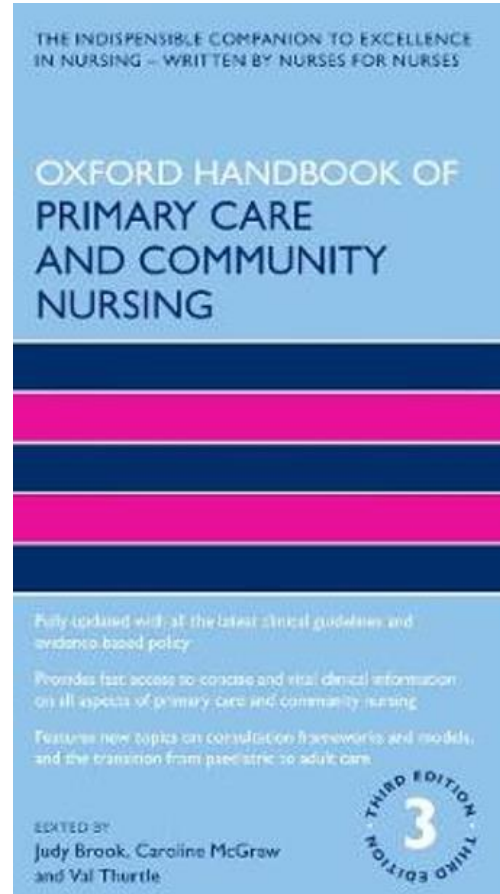
#### Recommended

[Anxiety disorders and comorbid depression in community dwelling older adults](#)

# Ebooks: Oxford Handbooks

Search the title on  
the Knowledge  
and Library Hub

Or go direct to  
[Oxford  
Academic](#) to  
search the  
collection

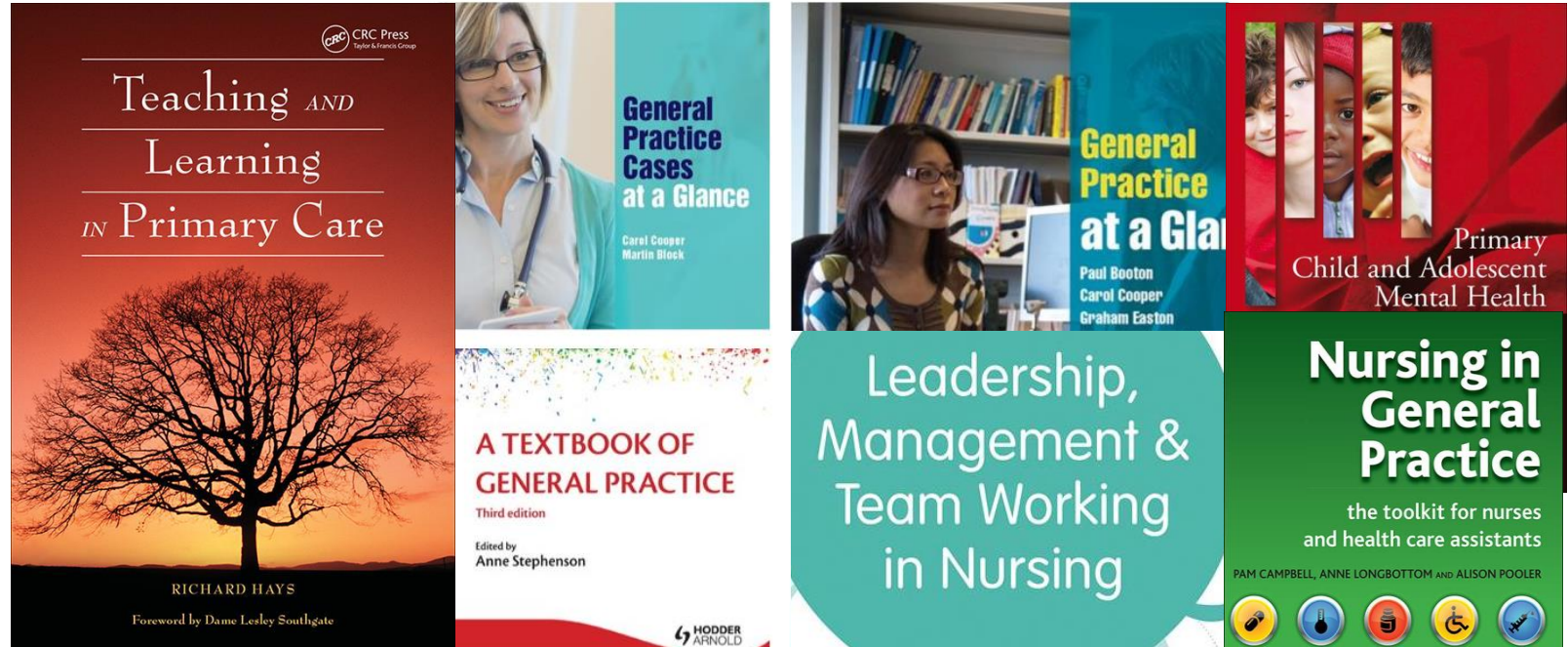




# Ebooks: Kortext

Search the title on  
the Knowledge and  
Library Hub

Or go direct to  
[Kortext](#) to view the  
collection



# Ebooks: Kortext

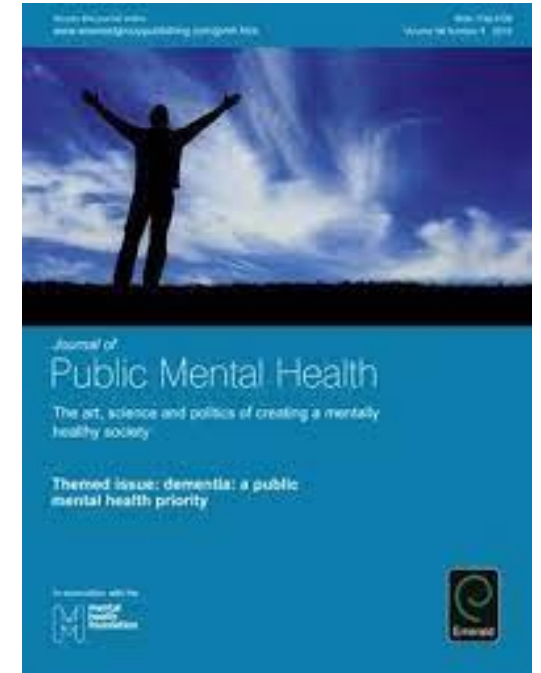
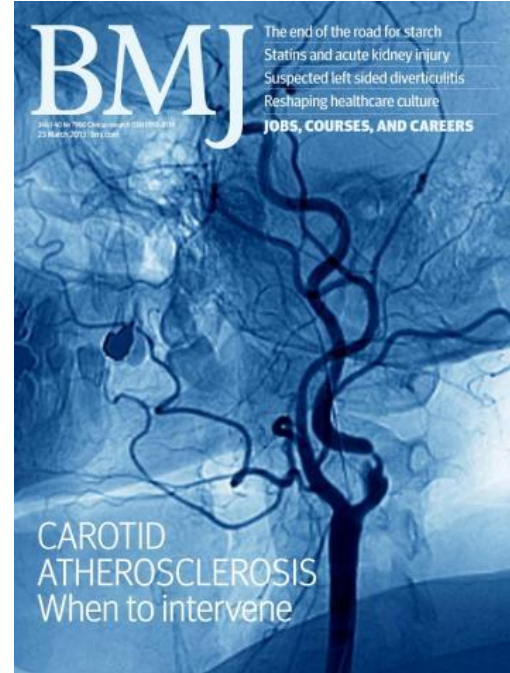
Search the  
title on the  
Knowledge and  
Library Hub

Or go direct  
to [Kortext](#) to view  
the collection





# Online journals



Search the journal title on the Knowledge and Library Hub  
Or go direct to the [Browzine journal platform](#) to view the collection

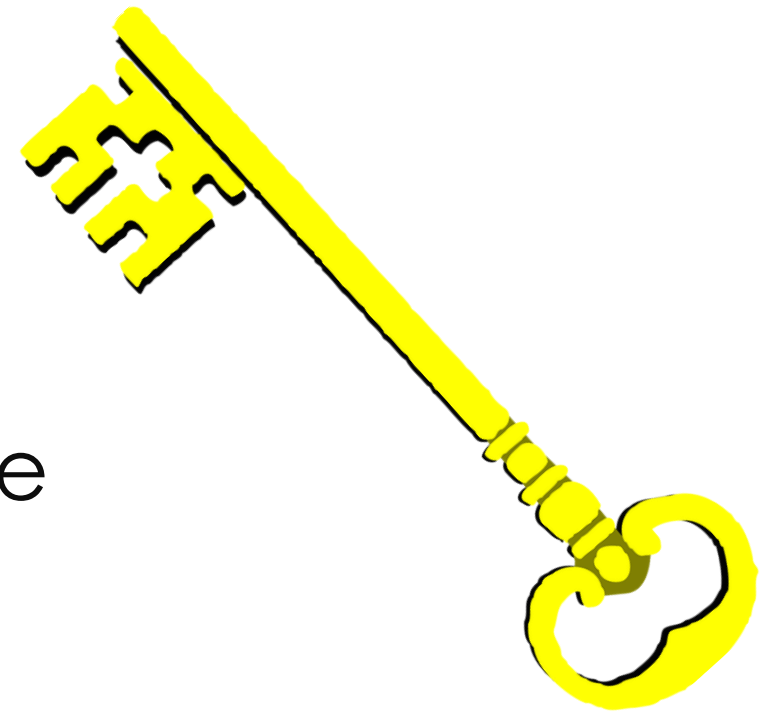
# Databases



Access via the Knowledge and Library Hub

# Sign up for NHS OpenAthens

- Search NHS OpenAthens Registration or go to [openathens.nice.org.uk](https://openathens.nice.org.uk)
- Set your organisation as BLMK
- Use your NHS email address if possible



# LibKey Nomad browser extension

- Download the LibKey Nomad browser extension to give easy access to articles we subscribe to

(assessment OR examination) AND ("knee pain" OR "knee injury")



About 18,400 results (0.06 sec)

[HTML] A mixed methods study to investigate needs **assessment** for **knee pain** and disability: population and individual perspectives

[C.Jinks](#), BN Ong, J Richardson - BMC musculoskeletal disorders, 2007 - Springer

... the importance of health care needs **assessment**. Our aim was to provide a model for this for **knee pain** and disability, describing felt need (individual **assessment** of a need for health ...

☆ Save Cite Cited by 98 Related articles All 21 versions

[HTML] [springer.com](#)  
Full text @ My library

Anterior **knee pain**: a review.

JW Cutbill, KO Lady, RC Bray, P Thorne... - Clinical journal of sport ..., 1997 - europepmc.org

... guidelines for anterior **knee pain**. A consensus approach to anterior **knee pain** could result in ... more effective and standardized protocols for **assessment** and treatment, increased patient ...

☆ Save Cite Cited by 168 Related articles All 4 versions

[HTML] Evaluation of patients presenting with **knee pain**: Part I. History, physical **examination**, radiographs, and laboratory tests

WL Calmbach, M Hutchens - American family physician, 2003 - aafp.org

... encounter patients with **knee pain**. Accurate diagnosis ... causes of **knee pain**, as well as specific physical **examination** skills. ... The physical **examination** should include careful inspection ...

☆ Save Cite Cited by 149 Related articles All 10 versions

[HTML] [aafp.org](#)  
Full text @ My library

- [thirdiron.com/downloadnomad](http://thirdiron.com/downloadnomad)

# Interlibrary loans

- Need an article or book chapter we don't have access to?
- Email Beth to request it: [beth.thompson@nhs.net](mailto:beth.thompson@nhs.net)



# More details and contact info

More details:

[work-learn-live-blmk.co.uk/knowledge-specialist/](https://work-learn-live-blmk.co.uk/knowledge-specialist/)

Contact:

[beth.thompson16@nhs.net](mailto:beth.thompson16@nhs.net)